

# “Welcome to the Club”

## An Introduction into ESA’s Business from Industries’ Point of View

All the space you need



# Content

- European Space Agency ESA
- Astrium – a prime contractor to ESA
- ESA Members & Mandate
  - ESA Programs
  - ESA Budget
  - ESA Organisation
  - ESA C-Min 2008



- Astrium – an European prime contractor to ESA



# Astrium: the EADS space division

## Three key areas

### Astrium Space Transportation

The European prime contractor for civil and military space transportation and manned space activities



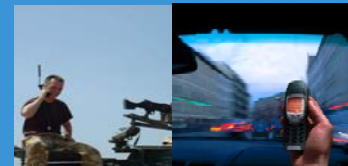
### Astrium Satellites

A world leader in the design and manufacturing of satellites and scientific systems



### Astrium Services

At the forefront of satellite services in the secure communications, imagery and navigation fields



# Astrium main figures and locations

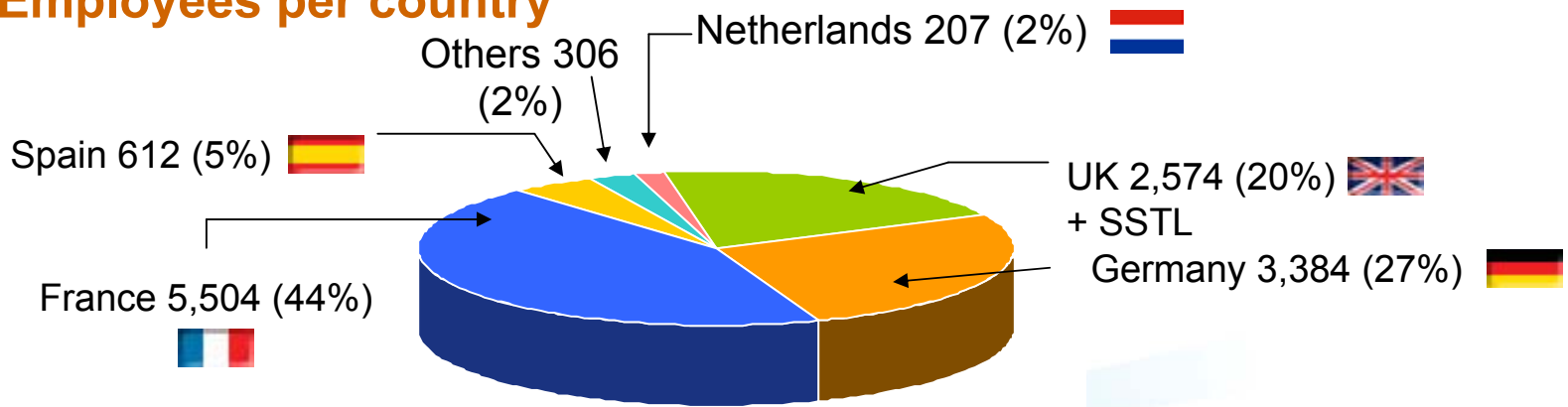
**Employees:** 12,587

**Turnover:** €3.5 billion

**Order backlog:** €12.9 billion

**Sites:** *France, Germany, UK (including SSTL), E, NL, Hungary, etc*

## Employees per country



This document is the property of Astrium. It shall not be communicated to third parties without prior written agreement. Its content shall not be disclosed.



# ■ ESA Members & Mandate

This document is the property of Astrium. It shall not be communicated to third parties without prior written agreement. Its content shall not be disclosed.

# ESA's mandate:

For peaceful / civil purpose ESA is engaged in the following space domains

- Science and Research
- Technique and Infrastructure
- Utilization and application

## Objectives of industrial policy

- geographical return (!)
- improvement of international competitiveness
- development of innovative space technologies

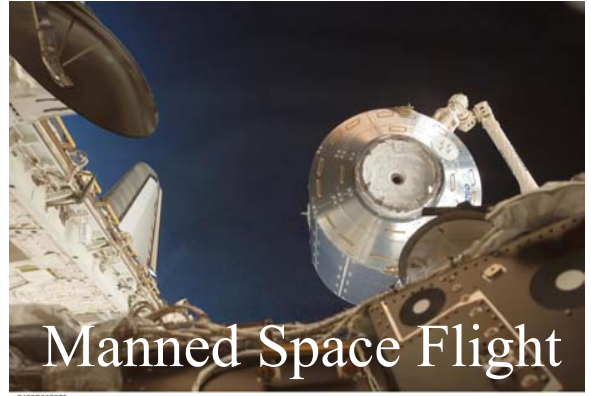
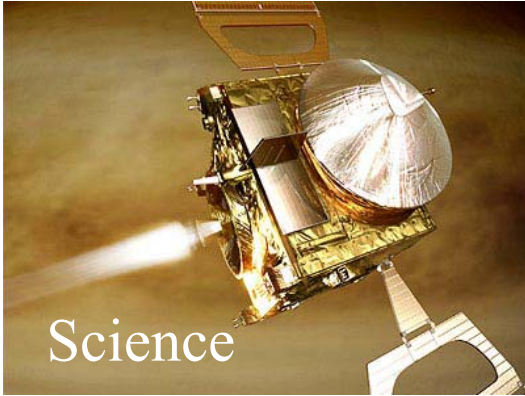
## Rules for human resource policy within ESA:

- competence
- proportional balanced between member states



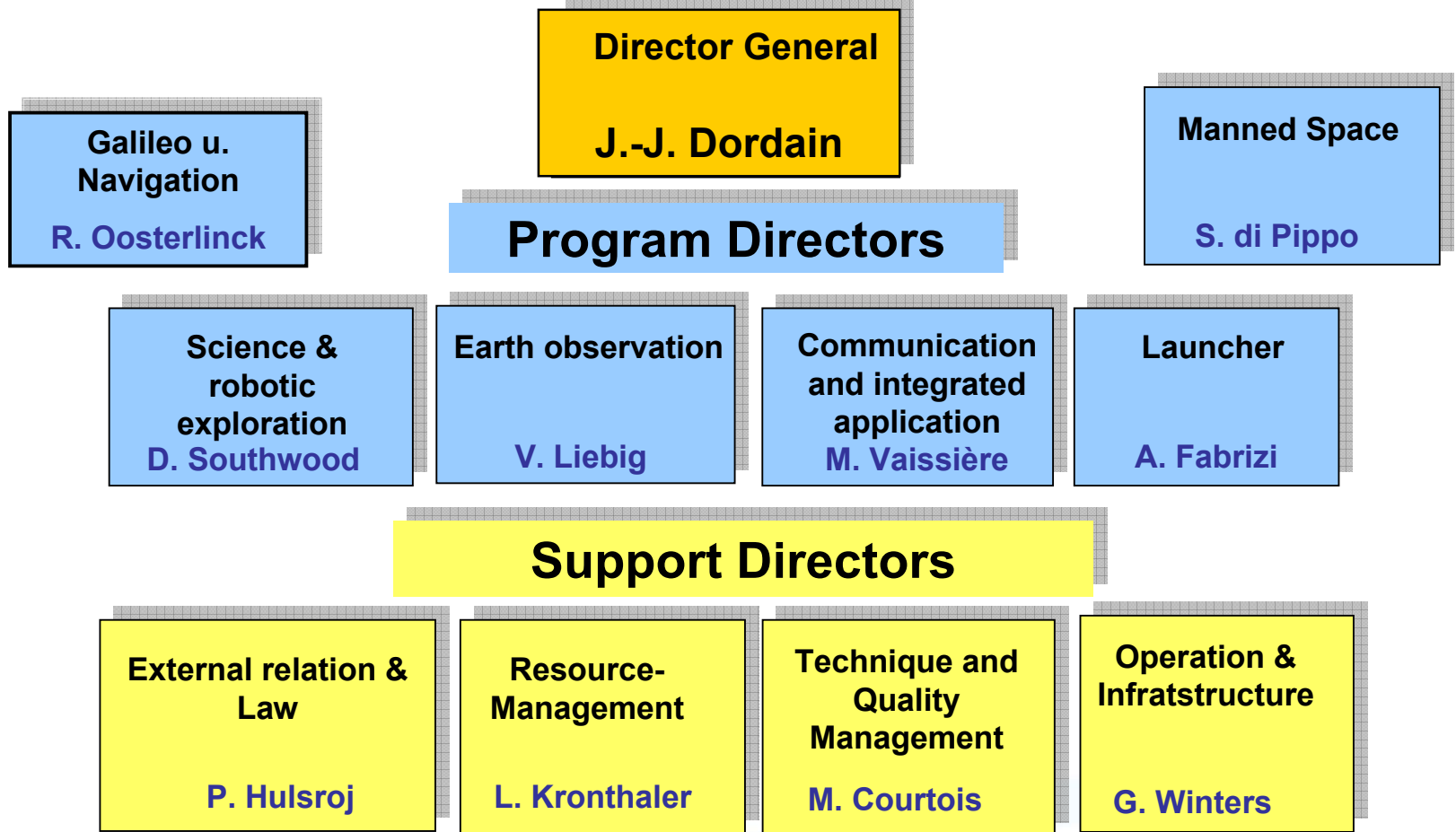


# esa Programs:



This document is the property of Astrium. It shall not be communicated to third parties without prior written agreement. Its content shall not be disclosed.

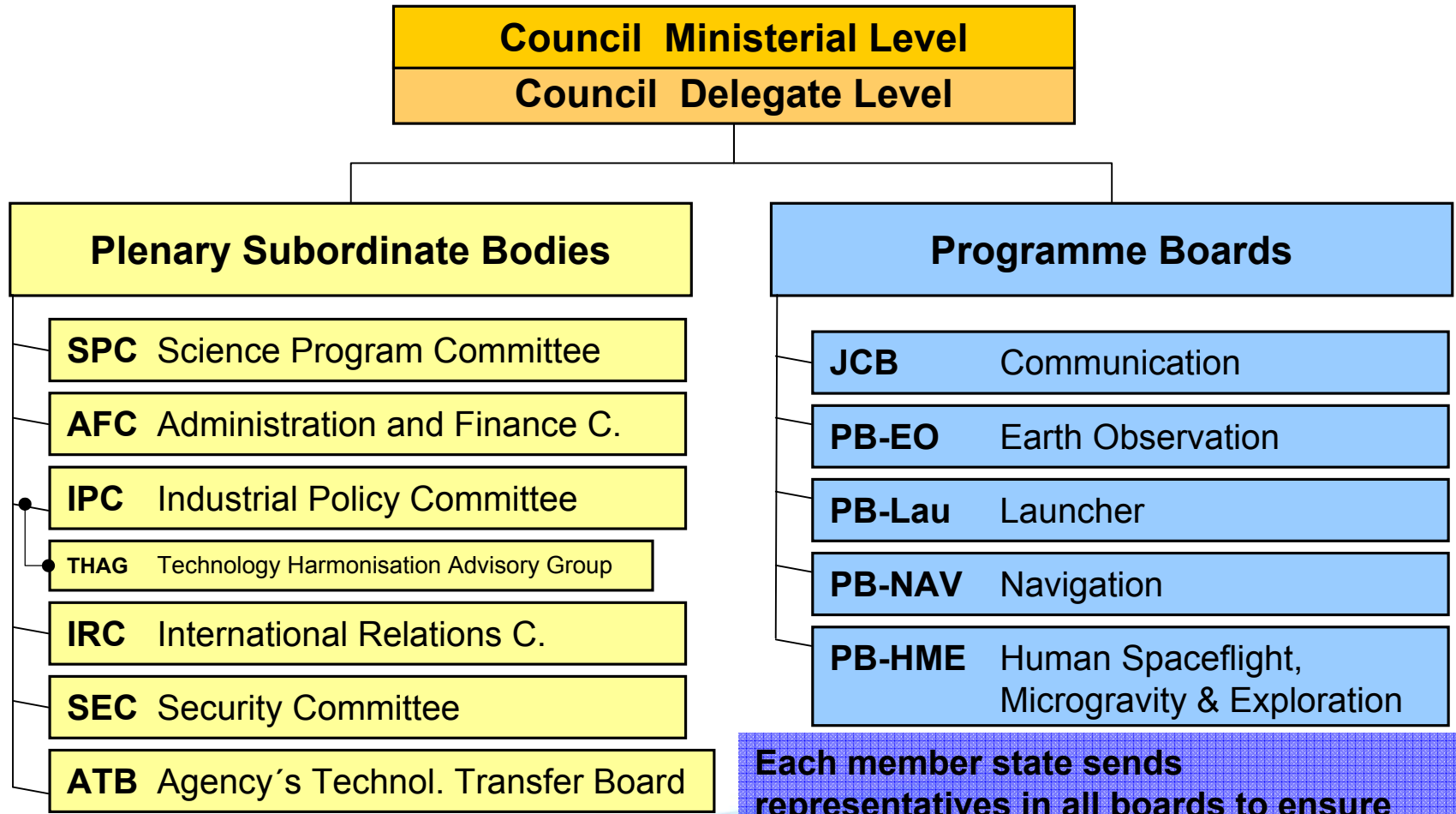
# ESA Organization



This document is the property of Astrium. It shall not be communicated to third parties without prior written agreement. Its content shall not be disclosed.



# ESA-Boards

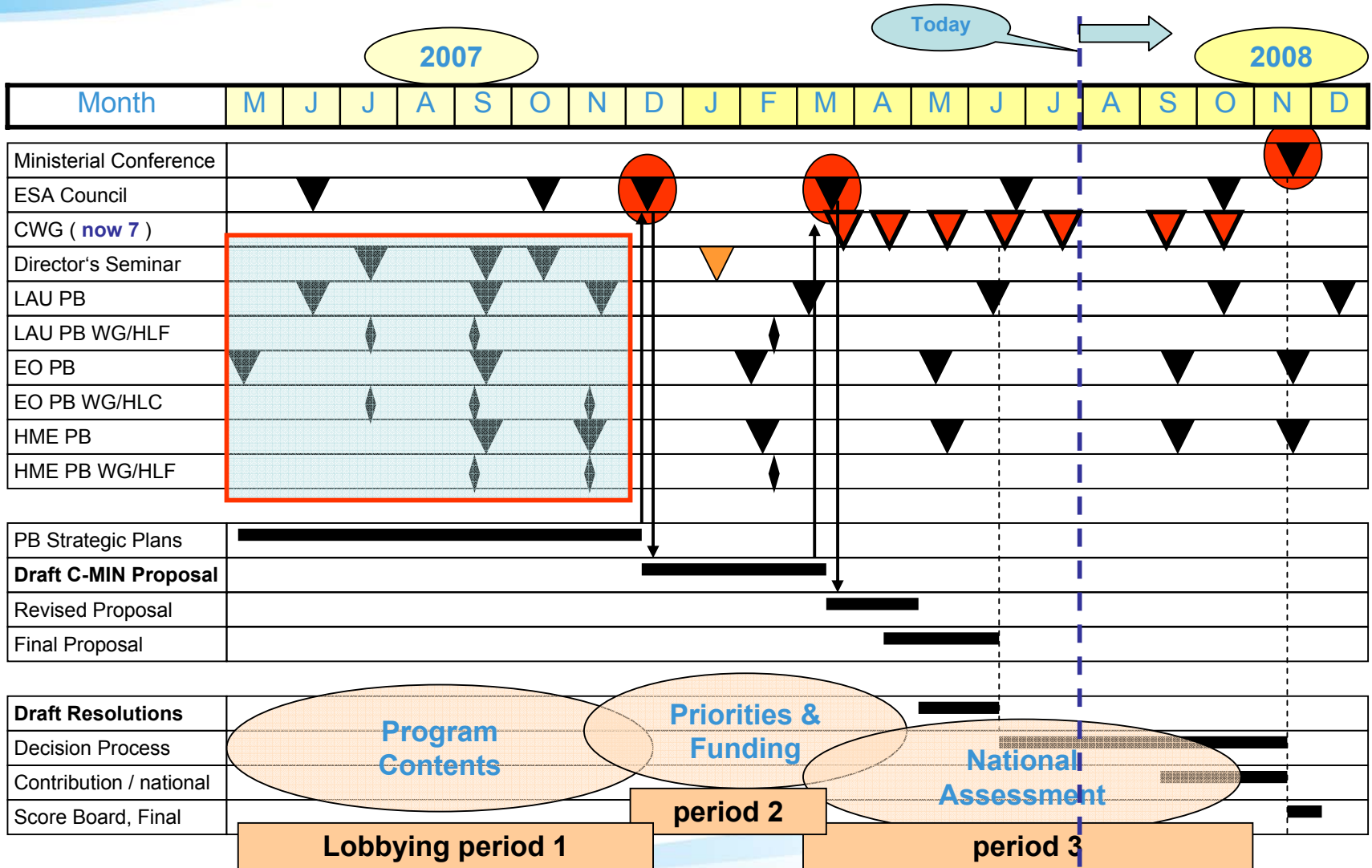


**Each member state sends representatives in all boards to ensure consideration of national interests**

# ■ ESA C-Min 2008

This document is the property of Astrium. It shall not be communicated to third parties without prior written agreement. Its content shall not be disclosed.

# C-MIN 2008 Preparation Schedule

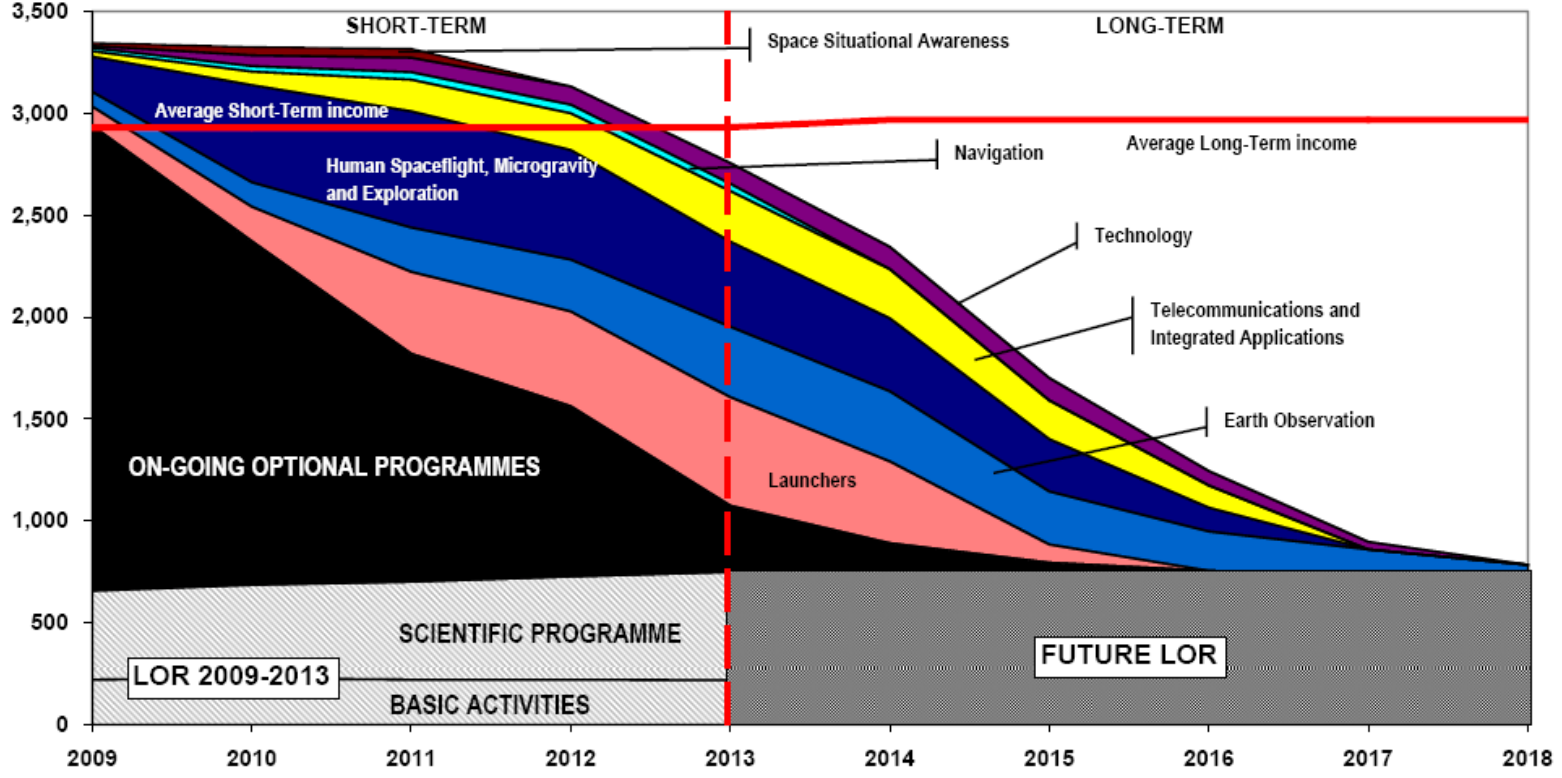


This document is the property of Astrium. It shall not be communicated to third parties without prior written agreement. Its content shall not be disclosed.



# New overall ESA corridor planning

**ESA Ministerial Council 2008**  
**Proposed Overall Payment Appropriation Requirements and Average Income**  
**in M€, 2008 economic conditions**



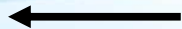
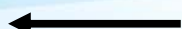
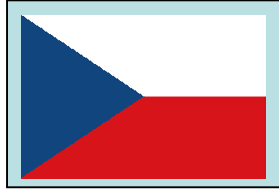
This document is the property of Astrium. It shall not be communicated to third parties without prior written agreement. Its content shall not be disclosed.



ESA	C-MIN Progr.- Prop. / M€
MAN	SCI, Science, mandatory, 5 %/y → ~426/y GB, General Budget, 2,5 %/y → ~ 204/y
LAU	LAU, CSG funding → ~ 82/y
	LAU, AR 5 ARTA → 720 total 1. slice → 302
	LAU, AR 5 Post ECA → 1550 total (?) first period → 340
	LAU, VEPP Vega evo. → 90 (total 160)
	LAU, VERTA → 91 (total 226)
	LAU, FLPP periode 2, step 2 → 110 (total 316)
EOP	EO, GMES segment 2 → 383 (total 987)
	EO, Meteosat MTG ph. C/D → 826 (was 1170) Compl Progr +G/S+Ops+launch → 3,1 B€
	EO, Climate Change CCI → 80 (total 170)
HME HSF	HSF, ISS Exploitation period 3 → 1612
	HSF, ISS ELIPS period 3 → 319
	HSF, ISS APAP (ATV prod. acc.) → 118
	HSF, CSTS → 140
	HSF, ISS Extension & Evo. → 165
HME SRE	SRE, Rob. Expl. Exomars → 626 on top
	SRE, Rob. Expl. MSR NET → 65
	SRE, Rob. Expl. Aurora Core → 100 (was 140)
TIA	ARTES, No. 10, ATM, phase 2 → 70 (was 195)
	ARTES, No. 07, EDRS → 170 (total 300)
	ARTES, No. 20, IAP → 70 (total 160)
	ARTES, core (1,3,4,5,8,11) → 124 (total 610)
GAL	NAV, EGEP, period 2 → 120 (was 150)
SSA	SSA → 270 planned / → 100 reduced
TEC	Technology, NewPro, GSTP → 223 (was 423)



Potential  
Participation of  
Czech Republic



This document is the property of Astrium. It shall not be communicated to third parties without prior written agreement. Its content shall not be disclosed.



# Objectives of national interests:

- European Integration AND reflection of national interests
    - Geographical return
    - Personnel
    - National profiled participation
  
  - Successful implementation of Galileo and GMES
    - Define profiled national contribution
- **Ensure clear national profile within decisions of C-Min**
    - Analyse and define participation in mandatory & optional programs
    - Secure budget participation and obtain shares in a.m. programs
    - Support R&D activities on national level with “National Space Plan & Budget”